

IBM® Tivoli® Software

Maximo Asset Management – Version 7 Releases

Update Reports Utility – Starting with Version 7.5.0.3
Version 1

Pam Denny
Maximo Report Designer/Architect



CONTENTS

- Revision History iv
- 1 Overview 5
- 2 Version 7 Report Types 6
 - 2.1 Enterprise Reports.....6
 - 2.2 Ad Hoc (QBR) Reports7
- 3 Page Break Update Utility 8
 - 3.1 When should Page Break Update Utility be applied?9
 - 3.2 Page Break Update Utility Details10
 - 3.3 Additional Notes on Page Break Update Utility11
- 4 Auto Layout Update Utility 12
 - 4.1 Overview12
 - 4.2 When should Auto Layout Update Utility be applied?13
 - 4.3 Auto Layout Update Utility Details.....13
 - 4.4 Additional Notes on Auto Layout Update Utility.....13
- 5 Update Utility Process – Enterprise Reports 14
 - 5.1 Existing Report Export Step.....14
 - 5.1.1 Export Backup Location14

5.2	Update Process	15
5.3	Enterprise Update Utility Commands	16
5.3.1	To Update Enterprise reports for all updates.....	16
5.3.2	To Update Enterprise reports for either Page Break or Auto Layout	16
5.3.3	Saving and reviewing the updated report design files.....	17
5.3.4	Enterprise Reports - If you need to restore the original files from a backup ...	17
6	Update Utility Process – QBR Reports	18
6.1	Existing Report Export Step.....	18
6.1.1	Export Backup Location	18
6.2	Update Process	19
6.3	QBR Update Utility Commands	20
6.3.1	To Update QBR reports for all updates	20
6.3.2	To Update QBR reports for specific updates	20
6.3.3	QBR Reports - If you need to restore the original files from a backup.....	20
7	Miscellaneous Information	21
7.1	Property Files.....	21
7.2	Logging.....	21
	Reference Materials	22
7.3	Trademarks	24

REVISION HISTORY

Date	Version	Revised By	Comments
March 2013	1	PD	Updated formatting and reference material links
July 2012		PD	Initial Release

1 Overview

This document details two report utilities that are available to you. These utilities automate the process of applying updates to report designs, rather than manually editing each report. These are known as update utilities, and supplement the existing utilities of importing and exporting report designs.

The two utilities are Page Break and Auto Layout. Both utilities are for formatting data within a report. Additionally, within each of these two utilities are variations for the two different types of reports in Version 7 – which are Enterprise Reports, and QBR (Query Based Reporting) or Ad Hoc Reports. Details on these report types are in the section below.

You may want to utilize these utilities in certain scenarios – whereas in some cases, they may not be utilized below. Be sure to review the features of each utility, the types of reports they apply to, along with the releases in which they were introduced, to determine if they are applicable to you or not.

Note: This document is specific to the Version 7.5.0.3 and future releases. For information on this functionality for releases prior to Version 7.5.0.3, reference the document below:

<http://www-01.ibm.com/support/docview.wss?uid=swg21433106>

2 Version 7 Report Types

2.1 Enterprise Reports

Enterprise reports are also often referred to as Operational or transactional reports. These reports are primarily composed of the day to day detail reports users require for their daily business tasks. Enterprise reports are developed within the BIRT Report Design tool, and imported into V7 for access by users.

Examples of Delivered Enterprise reports include:

Work Order Details, Asset Details, Work Order Pick, Inventory Transaction Reports

Work Order Details

1005: Electric Cart Tune-Up

Asset: 12300 Electric Cart
 Location: SHOPPING Shipping and Receiving Department
 (S)

Sched Start:	
Sched Finish:	
Target Start:	12/31/08
Target Finish:	12/31/08
Actual Start:	
Actual Finish:	
Report Date:	12/31/08
Reported By:	Joe Jones

Task ID: 20 Description: Check tires, lights, horn, mirror
 20 Check windshield wipers and steel

Issues and Returns Transactions

Storeroom: CENTRAL
 Site: BEDFORD
 Start Date: 1/1/00
 End Date: 1/1/02

Item: 11400	Description: Seal, Mechanical, Self Aligning- 1 In ID	Transaction Type: IS				
Date	Qty	Condition Code	Asset	Rot Asset	Issue To	WO #
10/20/01	2:29:27 PM	-L	13170		LDU	30058
8/7/01	2:29:27 PM	-L	13170		LDU	30067
6/7/01	2:29:27 PM	-L	13170		LDU	30037
3/16/01	2:29:28 PM	-L	13170		LDU	30048
12/25/00	2:29:28 PM	-L	13170		LDU	30029

Work Order Pick

WO: 1003 Rebuild Feedwater Pump

Site: BEDFORD Storeroom: CENTRAL

Item: 11453 Seal, Mechanical, Self Aligning- 1 In ID
 Qty: 1

Bin	Lot
A-4-9	A-431
C-5-3	A-431

Item: 117084 Shaft- 1 Inch Dia
 Qty: 1

Bin	Lot
C-6-2	

Asset Details

11430: Centrifugal Pump 100GPM/60FT HD

Site:	BEDFORD	Type:	
Status:	OPERATING	Priority:	3
Maintain Hierarchy:	N	Serial Number:	377 5A
Parent:	11400	Location:	BR430
Parent Description:	Roller- 50,000 lb/Hr/ Gas Fired/ Water Tube	Location Desc:	Condensate Return Pump Centrifugal/100GPM/60FTHD

Purchase Details						
Vendor	Manufacturer	Install Date	Warranty Exp Date	Purchase Price	Replace Cost	Total
DR	DR	4/7/95	1/29/11	18500.00	23000.00	1123

Downtime			
Asset Up-T	Total Downtime	Changed By	Changed Date
1	40.5	WT:SON	2/9/05 8:01:37 AM

Sub Assemblies			
Asset	Asset Description	Location	Location Description
23572	Motor- 10hp/1750rpm/TFFC/254T Frame/440v/3ph/60hz	BR431	Motor- 10hp/1750rpm/TFFC/254T Frame/440v/3ph/60hz

2.2 Ad Hoc (QBR) Reports

Ad Hoc reports are also known as QBRs or Query Based Reporting. These reports enable business users to create their own, individual reports on the fly without the need for technical skills or database knowledge. QBR reports are created within the various applications, by presenting a tabbed window that the user navigates thru to build his report. Within this window, the user selects the fields he wants in his own report, along with defining sorting, grouping and filtering.

QBR reports can be created for very simple summary reports containing only attributes of the main table of the application, or more complex reports. The complex, detail reports can incorporate fields from multiple related tables, and can also utilize multiple one-to-many relationships.

Because QBRs are created by individual Users within the Version 7 applications, they are identified in the database where REPORT.USERID is not null. Additionally, you can quickly find them in the Report Administration by sorting on the 'User ID' field, or by creating a saved query where the userid is not null.

An example of an Ad Hoc Report is shown here below.

The screenshot displays a web-based reporting interface for Tivoli Software. The main content area is titled "Asset Specification and Work Order Details". It contains two primary data tables.

Asset Details Table:

Asset	Description	Location	Parent	Relating Class	Linear	Site	Asset Tag	Type	Failure Class	Installation Date	Inventory Cost
11450	Centrifugal Pump 1000PMA/OPTH	28450	11400	PUMPJOB	N	SEOPFD	6423		PUMPS	02/26/98	9.90

Specifications Table:

Asset	ASSETSPECID	End Date Measure	End Measure	Start Date Measure	Start Unit of Measure	Start Measure	Mandatory?
11450	199						N
11450	199						N
11450	200						N
11450	201						N
11450	202						N
11450	203						N
11450	204						N

Work Order Details Table:

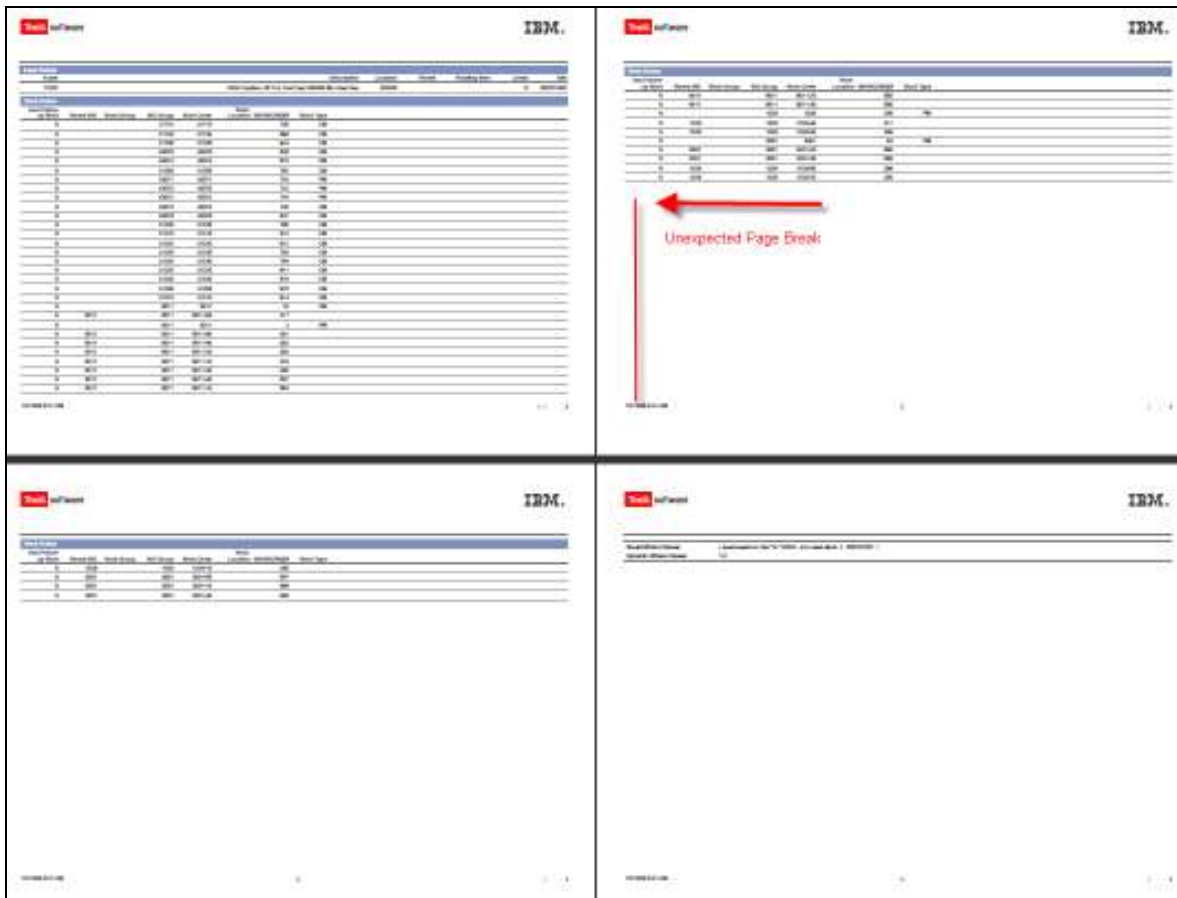
Work Order	Work Type	Status	Status Date	Target Start	Target Finish	Scheduled Start	Scheduled Finish	
91091	DN	APPR	10/12/01	2:45:42 PM	10/12/01	3:45:42 PM	10/12/01	10:57:42 PM
2155	DN	CLOSE	10/23/98	2:45:25 PM	10/23/98	3:45:26 PM	10/23/98	3:45:26 PM
88111	DN	CLOSE	4/29/98	3:45:49 PM	4/29/98	3:45:49 PM	4/29/98	3:45:49 PM
90491	DN	CLOSE	6/2/99	3:45:47 PM	6/2/99	10:57:47 PM	6/2/99	10:57:47 PM
90061	DN	CLOSE	6/23/00	3:45:29 PM	6/23/00	3:45:29 PM	6/23/00	3:45:29 PM
91061	DN	CLOSE	7/17/01	3:45:28 PM	7/17/01	3:45:28 PM	7/17/01	3:45:28 PM
87091	DN	CLOSE	11/30/98	6:46:09 PM	11/19/98	6:45:02 PM	11/23/98	1:21:45 AM
91051	DN	CLOSE	6/6/01	3:45:41 PM	6/6/01	3:45:41 PM	6/6/01	3:45:41 PM
88051	DN	CLOSE	8/7/98	2:45:46 PM	8/7/98	3:45:46 PM	8/7/98	3:45:46 PM
89081	DN	CLOSE	10/21/98	2:45:44 PM	10/23/98	3:45:44 PM	10/23/98	3:45:44 PM
91071	DN	CLOSE	7/24/01	2:45:42 PM	7/24/01	3:45:42 PM	7/24/01	3:45:42 PM
2432	DN	CLOSE	12/2/99	6:47:38 PM	11/23/99	2:04:46 AM	11/23/99	2:04:46 AM
7492	DP	CLOSE	6/9/98	10:10:00 PM	10/3/98	3:45:26 PM	10/3/98	3:45:27 PM
4294	DN	CLOSE	10/2/99	3:45:26 PM	10/3/99	3:45:26 PM	10/3/99	3:45:27 PM
90121	DN	CLOSE	1/2/01	3:45:40 PM	1/2/01	3:45:40 PM	1/2/01	3:45:40 PM

3 Page Break Update Utility

The page break utility updates report design files to resolve unexpected page break issues when reports are converted to Adobe® PDF format for printing or saving.

The unexpected page break occurs when a report is generated in the report viewer. The report engine automatically inserts page breaks after every 50 rows. This is done for viewing optimization so the user does not need to wait for the entire report to generate before viewing the contents. However, these page breaks are also used when the report is converted to PDF output, which can cause page breaks to occur in the middle of a page.

An example of the unexpected page break is shown below. In this case, a four page report is generated when converted to PDF. However, on page two highlighted by the red arrows, a page break unexpectedly occurs in the middle of the page.



3.1 When should Page Break Update Utility be applied?

You may want to apply the page break update utility in these specific cases:

1. If you have QBR reports created before the Maximo Base Services 7.1.1.7 release.
In these cases, you may encounter an unexpected page break issue when the report is exported from the report browser to PDF for printing or saving.
2. If you have any enterprise reports, with noticeable page break issues, with the conditions below:
 - a. Delivered list reports that you utilize
 - b. Custom enterprise reports that you created prior to Maximo Base Services 7.1.1.7 release

3.2 Page Break Update Utility Details

To resolve the unexpected page break issue when converting a report to Adobe PDF, the following changes are made to each report via the Page Break Upgrade Utility.

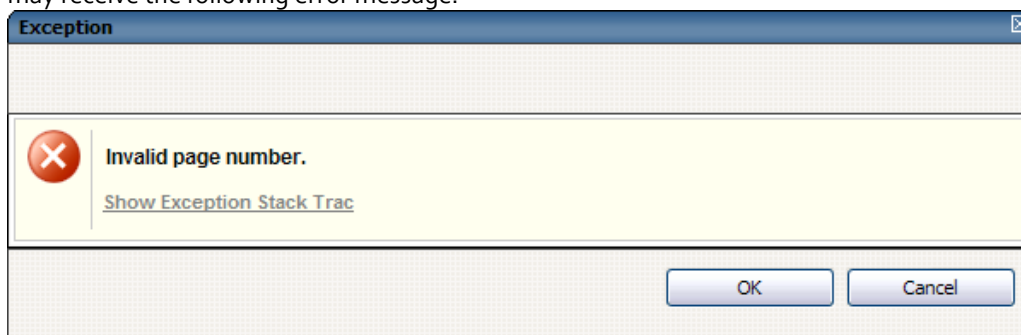
1. A new parameter called "usepagebreaks" is added.
2. The code below is added to the report's beforeFactory method:

```
if ( (reportContext.getParameterValue("usepagebreaks") == "false") ||
    reportContext.getOutputFormat() == "pdf" ) {
// Give each table in the report a name, and add the names to the list below,
// e.g. ["mainTable", "childTable1"]
var tableListing = ["mainTable"];
for each(var tableName in tableListing) {
    var table = reportContext.getReportRunnable().designHandle
        .getDesignHandle().findElement(tableName)
    if (table != null) {
        table.setProperty("pageBreakInterval", 0);
    }
}
}
```

3. A line is added to the report's comments and the comments for each table indicating that this fix has been applied.

3.3 Additional Notes on Page Break Update Utility

1. The Page Break Update Utility does not remove all page breaks from PDF output. It only removes the automatic page breaks inserted by default after every 50 records.
2. Page breaks are hardcoded in the report output at runtime. This update requires the report to be re-generated when it is exported to PDF.
 - a. Because of this, when your users select to export the report to PDF for printing or saving, this process may take longer after the update is applied.
 - b. Additionally, when the report is exported to PDF, the report viewer* will no longer be synchronized with the outputted pdf report content. If you try to change pages in the viewer, you may receive the following error message.



When you click OK, the report content will be refreshed with the current pagination.

*The report viewer displays the content of the report in the report browser session.

Note: It is recommended that reports only be printed or exported once viewing is complete.

3. Starting with Version 7.1.1.7 released in June 2010, the page break modifications detailed below are incorporated.

A. The report design templates include the page break changes.

Note: To insure the page breaks are applied properly, when you create a custom report, any tables you add should be given names and added to the beforeFactory script. Likewise, if you modify default table names, you should update the script to reflect the new names.

B. The Version 7 QBR report functionality includes the page break updates in any new Query Based reports you create.

4 Auto Layout Update Utility

4.1 Overview

The auto layout utility updates report design files from Fixed to Auto Layout so the contents of the entire report display.

With the BIRT 3.7.1 Upgrade, many QBR reports may default to fixed page layout. Fixed layouts are optimized for viewing and printing in PDF, however, they can truncate the content of the reports. The alternative is auto layout, which enables all report content to display within the Report Viewer. Auto layout allows the content to scale with the size of the browser.

An example when the auto layout update may be needed is shown below. In this case, the report content is not fully displayed within the report viewer, and the last column text is truncated.



The screenshot shows a web browser window displaying a report titled "Security Groups". The report content is truncated, and a red arrow points to the truncated text in the last column. The table below represents the data shown in the report.

Group	Description	Independent of Other Groups	Authorize Group for All Sites	Authorize Group for All Sites	Authorize Group for All Labels
DELETED	New User	N	N	N	F
DELSERVICE	Self Service	N	N	N	F
STOREOWNER	Storeowner Manager	N	N	N	F
ITEMNGR	Item Manager	N	N	V	F
STOCKNGR	Stockpile Service Manager	N	N	V	F
TOOLNGR	Tool Manager	N	N	V	F
SERVGR	Service Desk Manager	N	N	N	F
SERVGR1	Service Desk Mgr (Tap 1)	N	N	N	F
PURCHASNG	Purchasing	V	V	V	V
REPORTADMIN	Report Administrator	V	V	V	V
PURCHNGR	Purchase Assistant	N	N	N	F

4.2 When should Auto Layout Update Utility be applied?

You may want to apply the auto layout update utility in these specific cases:

1. If you have QBR reports created prior to Maximo Base Services 7.5.0.3 release
2. Also, due to the wide range of custom reports that can be created, you could also encounter this issue in one of your Enterprise custom report created prior to Version 7.5.0.3.

4.3 Auto Layout Update Utility Details

To resolve the auto layout issue, the following changes are made to each report via the Auto Layout Update Utility.

1. The code below is added

```
<property name="layoutPreference">auto layout</property>
```

2. A line is added to the report's comments indicating that this fix has been applied.

4.4 Additional Notes on Auto Layout Update Utility

If you have a custom report design created prior to Maximo 7.5.0.3, using either BIRT 2.1.2 or 2.3.2, and you resave that custom report design in BIRT Report Designer 3.7.1, a layout preference will automatically be inserted. Typically, an auto layout is applied to the report design, but in some cases, a fixed layout is applied.

Therefore, if you execute the pagebreak update on these reports, it may appear that the autolayout update has been executed as well.

5 Update Utility Process – Enterprise Reports

When you update enterprise reports with the Page Break and Auto Layout utilities, the following process occurs -

5.1 Existing Report Export Step

First, the existing reports are exported to a backup directory.

5.1.1 Export Backup Location

1. You can specify the location of the exporting backup directory by setting the value of `maximo.report.birt.outputfolder` in the `reporttools.properties` file. The name of the directory folder is `<outputfolder>-backup-<timestamp>`.

By default, the output folder path is `<V7>\reports\birt`, so the default backup location is `<V7>\reports\birt-backup-<timestamp>`.

```
<V7>\reports\birt-backup-1333469623640
  libraries
    asset.properties
  reports
    ASSET
      assetprint.rptdesign
      assetprint.rptdesign.xml
```

2. Additionally, you can view the actual location the files are written to either in the console or in the resulting `update.log`. The `update.log` file is available in `<V7>\reports\birt\tools`

5.2 Update Process

After the report backup has completed, the update process begins and includes the steps below.

1. The report is evaluated to determine if it needs to be updated. If the report design already includes all available updates, no action is taken on that report and the process moves to the next report.
2. If the report does require updates, the updates are applied and the updated report design is saved to a new folder.
 - a. The location of this folder is the same as the backup directory, which you specify in the `maximo.report.birt.outputfolder` setting of the `reporttools.properties` file. The name of the directory is `<outputfolder>\reports-modified-<timestamp>`.

By default, the output folder path is `<V7>\reports\birt`, so the updated report designs are located in `<V7>\reports\birt\reports-modified-<timestamp>`.

3. If no reports are updated, the `reports-modified` folder is not created.

5.3 Enterprise Update Utility Commands

The following variations of the Update Utility for Enterprise reports are available. To execute these commands, access your Version 7 server. Open a command prompt window and navigate to <V7>\reports\birt\tools.

5.3.1 To Update Enterprise reports for all updates

`updatereports`

Updates all reports with all available updates, which currently are the autolayout and pagebreak updates.

`updatereports savechanges`

Updates all reports with all available updates, which currently are the autolayout and pagebreak updates. Additionally, saves the modified reports to Version 75x database.

`updatereports app [appname]`

Updates all reports in the specified application with all available updates, which currently are the autolayout and pagebreak updates.

`updatereports app [appname] savechanges`

Updates all reports in the specified application with all available updates, which currently are the autolayout and pagebreak updates.

Additionally, saves the modified reports to the Version 75x database.

5.3.2 To Update Enterprise reports for either Page Break or Auto Layout

`updatereports type [updatetype]`

Updates all reports with the specified update type, which is either autolayout or pagebreak.

`updatereports type [updatetype] savechanges`

Updates reports with the specified update type, which is either autolayout or pagebreak. Saves modified reports to the Version 75x database.

`updatereports type [updatetype] app [appname]`

Updates all reports in the selected application for the specified update, which is either autolayout or pagebreak.

`updatereports type [updatetype] app [appname] savechanges`

Updates all reports in the selected application for the specified update, which is either autolayout or pagebreak. Saves modified reports to the Version 75x database.

Enterprise Update Utility Commands Details

5.3.3 Saving and reviewing the updated report design files

You can either specify to save the modifications to your Enterprise reports via the Save Argument in the update utility.

1. If you specify the savechanges argument in your update utility, the modified report designs are saved to the report repository, which is the Version 75x database, in addition to being saved to the report directory.
 - a. This will enable the updates to be available when executing the reports from within the various Version 75x applications.
2. If you do not specify the savechanges argument, the modified report designs are not saved to the database. This means that the updates will not be available when executing the reports from within the various Version 75x applications. The updates are only saved to the modified report directory, and you can view them using the BIRT report designer.
 - a. If you evaluate the updates from within the report designer, and determine that you want to implement them in your system, you can then either
 - Copy the reports from the outputted report folder to the reports source directory. Then, import them using the importreports command
 - Or you could re-execute the updatereports command using the savechanges argument.

5.3.4 Enterprise Reports - If you need to restore the original files from a backup

If you find that you want to rollback the updates, you can perform one of the options listed below

1. If the reports source directory < V7>\reports\birt\reports contains your pre-updated report designs, execute the importreports command to roll back the updates.
2. If the report source does not contain your intended report designs
 - a. Copy the initially exported reports from the backup directory to the reports source directory. The backup directory is what you specified in the previous step called 'Export Backup Location'
 - b. Once the pre-updated reports are copied, you can then execute the importreports command.
3. You can define the directory location for the import process to use via the importfolder setting in the reporttools.properties file. If you define this setting as the backup directory you created in the step 'Export Backup Location', the pre-updated reports will be re-imported into your system.

6 Update Utility Process – QBR Reports

When you update QBR reports with the Page Break and Auto Layout utilities, the following process occurs

6.1 Existing Report Export Step

First, before any updates are performed, the existing reports, including their design files, properties file and xml file, are exported to a backup directory.

6.1.1 Export Backup Location

1. You can specify the location of the exporting backup directory by setting the value of `maximo.report.birt.outputfolder` in the `reporttools.properties` file. The name of the directory folder is `<outputfolder>-backup-<timestamp>`.

By default, the output folder path is `<V7>\reports\birt`, so the default backup location is `<V7>\reports\birt-backup-<timestamp>`.

An example of an exported location and its contents is shown below:

```
<V7>\reports\birt-backup-1333469623640
  libraries
    ASSET_WILSON_1_13309660231330966054312.properties
  reports
    ASSET
      ASSET_WILSON_1327679581.rptdesign
      report-ASSET_WILSON_1327679581.rptdesign.xml
```

2. Additionally, you can view the actual location the files are written to either in the console or in the resulting `update.log`. The `update.log` file is available in `<V7>\reports\birt\tools`

6.2 Update Process

The update process begins when the report backup has completed. In these steps,

1. The report is evaluated to determine if it needs to be updated. If the report design already includes all available updates, no action is taken on that report and the process moves to the next report.
2. If the report does require updates, the updates are applied. The updated qbr report designs are placed in the report repository, the V7.5x database.

6.3 QBR Update Utility Commands

The following variations of the Update Utility for QBR reports are available. To execute these commands, access your Version 7 server. Open a command prompt window and navigate to <V7>\reports\birt\tools.

6.3.1 To Update QBR reports for all updates

updateqbrs

Updates all qbr reports with all available updates.

6.3.2 To Update QBR reports for specific updates

updateqbrs type [updatetype]

Updates all qbr reports with the specified update.

The current [updatetype] values include:

autolayout

pagebreak

QBR Update Utility Commands Details

The update QBR utility functions vary slightly from the Enterprise report utilities due to the way they are created. Starting with the Version 7.5.0.3 release, both the Enterprise and QBR update utilities back up the report design files as the initial steps. However, there is no save argument to the QBR utilities as the updates are always saved to the report repository, the Version 7x database.

6.3.3 QBR Reports - If you need to restore the original files from a backup

If you find that you need to rollback the updates, you can follow any one of the options listed below

1. You can copy the exported reports and import files from the backup directory to the reports source directory. After the copy is complete, you can then execute the importreports utilities.
2. You can define the directory location for the import process to use via the import folder setting in the reporttools.properties file. If you define this setting as the backup directory you created in the step 'Export Backup Location', when you execute the importreports utilities, the pre-updated reports will be re-imported into your system.

7 Miscellaneous Information

7.1 Property Files

The property settings in the reporttools.properties file enable the Report Update Utility. This file is located in <Version7.x>\reports\birt\tools

These properties are detailed below:

Output folder used for the update operation

maximo.report.birt.update.outputfolder=../../birt

The setting enables you to change the location of the backup files that are exported prior to the update.

Indicates whether the report updates should be saved to the database

maximo.report.birt.savechanges=false

If you set this value to true, the report updates will always be saved to the database – regardless if you specify the save argument in the update report command utility.

If you leave the default value to false, you must specify the save argument in the update report command utility for the report updates to be saved to the database.

Input folder used for the import operation

maximo.report.birt.inputfolder=../../birt-backup-1333469623640

7.2 Logging

As noted in the property section above, you can enable logging to see which reports have been updated.

The logging feature displays results in the console, and to the log file specified to the maximo.report.birt.updatelog property from reporttools.properties. The default file location and value is <V7>\reports\birt\tools\update.log. This log is used by all update utility commands, and the output is appended to the existing file each time the commands are executed.

You can also see the list of files updated by examining the contents of the <V7>\reports\birt\reports-modified-<timestamp> folder. Report design files that are not updated are not written to this folder.

For additional details on Report Logging, reference the document titled 'Report Logging V7 Release' available from this url:

<http://www-01.ibm.com/support/docview.wss?uid=swg21423974>

REFERENCE MATERIALS

To access additional Maximo Report Reference materials, access this IBM Maximo Wiki Page:

<https://www.ibm.com/developerworks/mydeveloperworks/wikis/home?lang=en#/wiki/IBM%20Maximo%20Asset%20Management/page/Reporting%20Documentation>

or its shortened url of <http://ibm.co/1321Cul>

This page contains the latest listing of report reference materials, including description, revision levels and hyperlinks to the documentation

Additional details on Maximo Reporting can be found throughout the Wiki Pages here

<https://www.ibm.com/developerworks/mydeveloperworks/wikis/home?lang=en#/wiki/IBM%20Maximo%20Asset%20Management/page/Reporting>

or its shortened url of

<http://ibm.co/VgncuK>

Notices

This information was developed for products and services offered in the U.S.A.

IBM may not offer the products, services, or features discussed in this document in other countries. Consult your local IBM representative for information on the products and services currently available in your area. Any reference to an IBM product, program, or service is not intended to state or imply that only that IBM product, program, or service may be used. Any functionally equivalent product, program, or service that does not infringe any IBM intellectual property right may be used instead. However, it is the user's responsibility to evaluate and verify the operation of any non-IBM product, program, or service.

IBM may have patents or pending patent applications covering subject matter described in this document. The furnishing of this document does not grant you any license to these patents. You can send license inquiries, in writing, to:

*IBM Director of Licensing
IBM Corporation
North Castle Drive
Armonk, NY 10504-1785
U.S.A.*

The following paragraph does not apply to the United Kingdom or any other country where such provisions are inconsistent with local law: INTERNATIONAL BUSINESS MACHINES CORPORATION PROVIDES THIS PUBLICATION "AS IS" WITHOUT WARRANTY OF ANY KIND, EITHER EXPRESS OR IMPLIED, INCLUDING, BUT NOT LIMITED TO, THE IMPLIED WARRANTIES OF NON-INFRINGEMENT, MERCHANTABILITY OR FITNESS FOR A PARTICULAR PURPOSE. Some states do not allow disclaimer of express or implied warranties in certain transactions, therefore, this statement may not apply to you.

This information could include technical inaccuracies or typographical errors. Changes are periodically made to the information herein; these changes will be incorporated in new editions of the publication. IBM may make improvements and/or changes in the product(s) and/or the program(s) described in this publication at any time without notice.

Any references in this information to non-IBM Web sites are provided for convenience only and do not in any manner serve as an endorsement of those Web sites. The materials at those Web sites are not part of the materials for this IBM product and use of those Web sites is at your own risk.

IBM may use or distribute any of the information you supply in any way it believes appropriate without incurring any obligation to you.

Information concerning non-IBM products was obtained from the suppliers of those products, their published announcements or other publicly available sources. IBM has not tested those products and cannot confirm the accuracy of performance, compatibility or

any other claims related to non-IBM products. Questions on the capabilities of non-IBM products should be addressed to the suppliers of those products.

This information contains examples of data and reports used in daily business operations. To illustrate them as completely as possible, the examples include the names of individuals, companies, brands, and products. All of these names are fictitious and any similarity to the names and addresses used by an actual business enterprise is entirely coincidental.

7.3 Trademarks

IBM, the IBM logo, and ibm.com are trademarks or registered trademarks of International Business Machines Corp., registered in many jurisdictions worldwide. Other product and service names might be trademarks of IBM or other companies. A current list of IBM trademarks is available on the Web at "[Copyright and trademark information](#)" at www.ibm.com/legal/copytrade.shtml.

Microsoft, Windows, Windows NT, and the Windows logo are trademarks of Microsoft Corporation in the United States, other countries, or both